

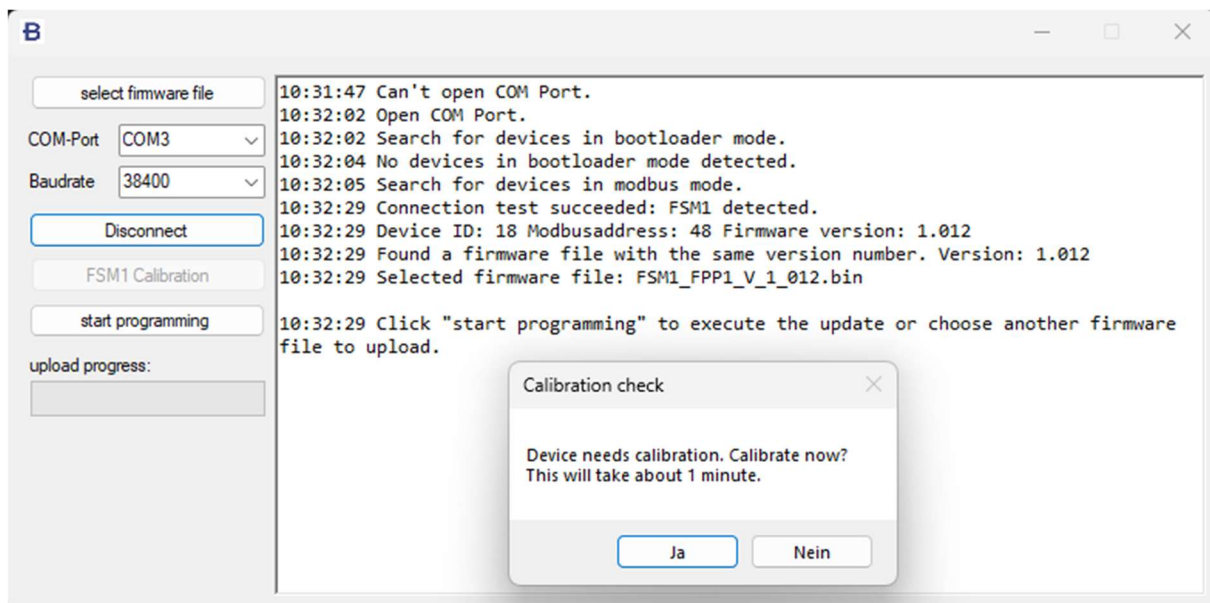
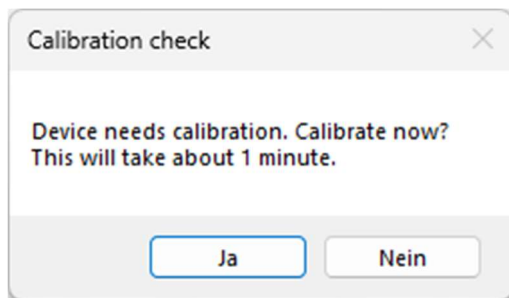


After upgrading the FSM1 firmware to versions 1.012 or newer, the motor driver has to be calibrated once. If the calibration has been run, no further calibration will be needed after subsequent upgrades.

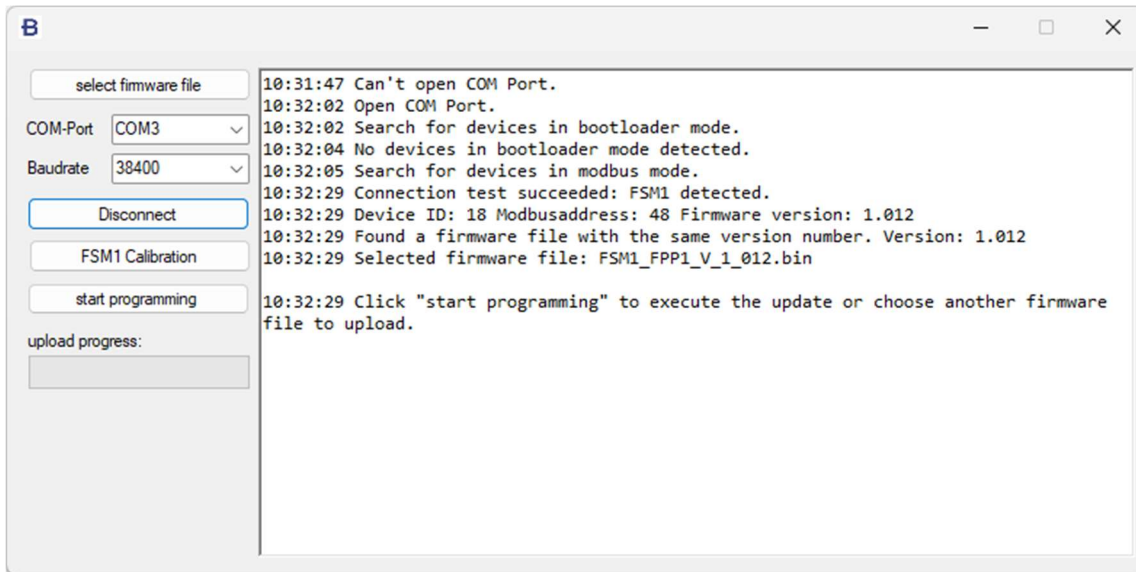
The BlueSens Firmware update Application will detect needed calibration after connecting to an uncalibrated FSM1 running firmware version 1.012 or newer in Modbus mode.

This means that after the upgrade, the motor has to be disconnected from power and reconnected to the BlueSens firmware updater application.

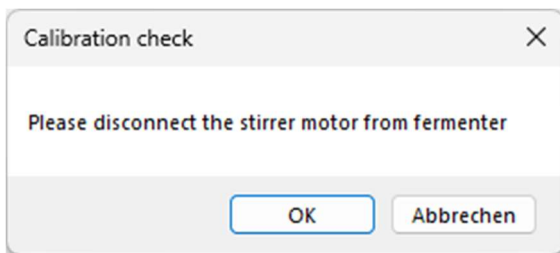
After successful connection, a message box will be displayed, asking for permission to start the calibration.



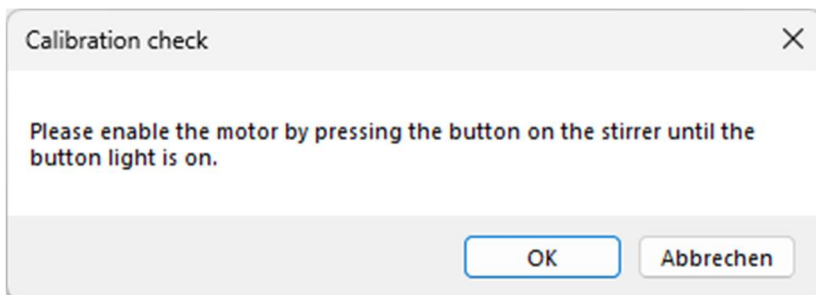
If the user clicks “no”, the procedure can also be started by clicking on the button “FSM1 calibration”.



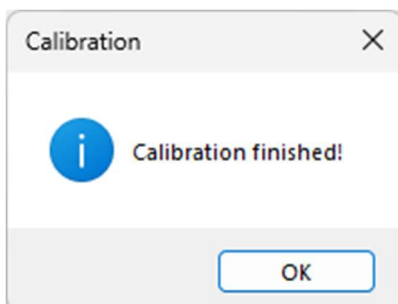
The motor must be able to turn freely, so no significant load may be connected (the screwed coupling is fine, but no fermenter bearing/stirrer).



The motor must be enabled by pressing the button so that the blue ring light is switched on, otherwise this message will be displayed:



During the calibration, the motor will turn slowly for about a minute. Afterwards, this message will be displayed.



The application can safely be closed and the motor be used immediately.